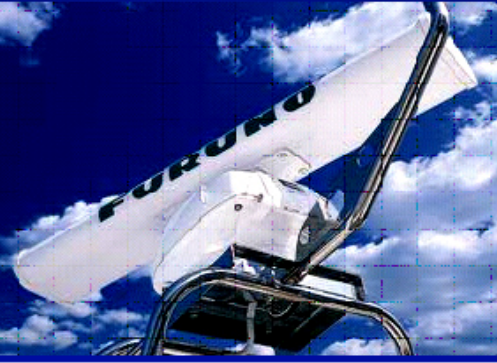


*Standard Electronics Package*

Package comprises of a Furuno GP-7000F 7" Widescreen Colour GPS/Plotter/Sounder combination unit including external GPS antenna and a 520-BLD 50/200kHz, 600W Depth/Temp Bronze low profile flush mount Through-Hull Transducer.



**JN Taylor & Co. Distributors of Quality Marine Electronics**

**GP-7000F**

**Colour GPS Plotter/Sounder c/w GPA-017 antenna**

192708

- Sunlight Viewable 7" TFT Bright Display (widescreen 16:9 aspect ratio)
- C-Map NT MAX Charts
- Dual SD Card Slots for C-Map Chart and Memory card (uses std SD Card)
- Fast Chart redraw speed offer quick updates for safe and efficient navigation
- Large Memory Capacity: 2,000 Waypoints, 200 Routes, 12,000 track points
- Built-in High Definition Dual Frequency Sounder (50 / 200kHz)
- High Output Power 600 Watts or 1kW RMS (1kW requires appropriate transducer)
- Combination of Split Screen Displays allows for fish finding and detailed plotter functions which is ideally suited for drift fishing
- Multiple Sounder Display Modes: Normal (single or dual frequency) : Bottom Zoom : Bottom Lock : Marker Zoom : Bottom Discrimination : A-Scope
- Range shift allows for accurate fish detection in deep water
- Operate in one of 2 Auto Modes (Fish or Cruise) or in dedicated Manual Mode

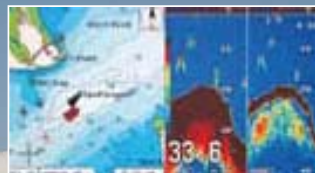
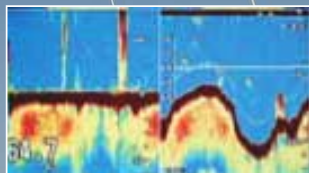


**520T-BLD**

**600W Depth/Temp Bronze Low Profile B-117**

194549

- 50/200 kHz Bronze Through Hull Transducer
- Suits Fibreglass/Wood/Metal Hull type installations



*Executive 700*

