

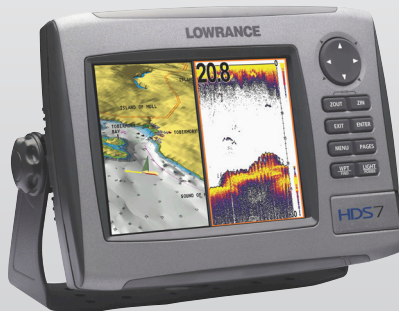


Craftsmanship Since 1946

Outsider 685



HDS-7



Model	Part
HDS-7	
Worldwide background map, no transducer	140-37

Build Your Own System Options
NMEA 2000® & Fuel Management
Broadband Radar
Transducers, up to 1 kW
Ethernetworks
VHF Marine DSC radios

NEW HDS-7 Fishfinder/GPS Chartplotter

Continuing in the series of new Lowrance HDS multifunctional technologies is this large-but-compact solution with 6.4"/17.8 cm full VGA colour viewing that renders astounding echosounder and navigation details. It also includes the new SolarMAX™ PLUS bright-sunlight/wide-angle display with pure-white LED screen/keypad backlighting that fully adjusts to zero-dim for night vision. Same for the built-in Broadband high-definition sounder technology and the high-sensitivity 16-channel GPS+MSAS antenna. HDS includes a new Navionics® worldwide background map. Plus, this HDS is now fully compatible with all Navionics® Platinum+ and Platinum chartcards with one high-speed SD card slot. Fully ready to build your complete stand-alone or networked onboard system.

HDS-7m



Model	Part
HDS-7m with worldwide background map	140-18

Build Your Own System Options
NMEA 2000® & Fuel Management
Broadband Radar
Ethernetworks
VHF Marine DSC radios

NEW HDS-7m Multifunction GPS Chartplotter

Enjoy big performance and color detail in this large-but-compact system with a 6.4"/17.8 cm full VGA colour display, with the sunlight and wide-angle viewability of the new SolarMAX™ PLUS screen technologies. Features rocker arrow keys, single keypad and SD card slot.

HDS-8



Model	Part
HDS-8	
Worldwide background map, no transducer	140-08

Build Your Own System Options

NMEA 2000® & Fuel Management
Broadband Radar
Transducers, up to 1 kW
Ethernetworks
VHF Marine DSC radios

NEW HDS-8 Fishfinder/GPS Chartplotter

Right-sized, and an easy fit with an easy-to-see display, this HDS delivers high-definition, Super VGA colour brilliance and clarity in an award-winning, 8.4"/21.3 cm display package. Plus it offers all the same advanced Lowrance HDS sounder and navigation technologies and features of the HDS-10, while it's likewise fully ready to build a complete onboard system.

HDS-8m



Model	Part
HDS-8m with worldwide background map	140-11

Build Your Own System Options

NMEA 2000® & Fuel Management
Broadband Radar
Ethernetworks
VHF Marine DSC radios

NEW HDS-8m Multifunction GPS Chartplotter

All the same features of the HDS-10 in an award-winning, right-sized package, featuring high-definition, Super VGA colour brilliance and clarity in a 8.4"/21.3 cm SolarMAX™ PLUS display.

HDS-10



Model	Part
HDS-10	
Worldwide background map, no transducer	140-03

Build Your Own System Options

NMEA 2000® & Fuel Management
HD Digital Radar
Transducers, up to 1 kW
Ethernetworks
VHF Marine DSC radios

NEW HDS-10 Fishfinder/GPS Chartplotter

The finest of new Lowrance echosounding and GPS navigation technologies with massive, high-definition 10.4"/26.4 cm Super VGA colour viewing. The new SolarMAX™ PLUS display renders brilliant detail in sunlight with the best wide-angle viewing ever available, while advanced pure-white LED screen/keypad backlighting fully adjusts to zero-dim for night viewing. The unique new FlyWheel™ dial and command soft keys give you easier and quicker control of Broadband Sounder echosounder and satellite navigation precision via the built-in 16-channel GPS+MSAS antenna. HDS includes a new Navionics® worldwide background map. Plus, this HDS is now fully compatible with all Navionics® Platinum+ and Platinum chartcards, with two high-speed SD card slots. Fully ready to build your complete stand-alone or networked onboard system.

HDS-10m



Model	Part
HDS-10m with worldwide background map	140-04

Build Your Own System Options
NMEA 2000® & Fuel Management
HD Digital Radar
Ethernetworks
VHF Marine DSC radios

NEW HDS-10m Multifunction GPS Chartplotter

Lowrance presents a new dimension in multifunction chartplotters with large-scale, high-definition 10.4"/26.4 cm Super VGA colour viewing. The new SolarMAX™ PLUS display renders brilliant detail in sunlight with the best wide-angle viewing available, with advanced pure-white LED screen/keypad backlighting. A unique new FlyWheel™ dial and command soft keys give you control with the greatest of ease and speed, and to precisely guide your way, a new high-sensitivity 16-channel GPS+MSAS antenna is internal. HDS built-in cartography features a new Navionics® worldwide background map. Plus, this HDS is now fully compatible with all Navionics® Platinum+ and Platinum chartcards with two high-speed SD card slots.